



Exhibitor Brochure

POSTPONED TO 1-3 December 2020
Tokyo Ryutsu Center (TRC)

Notice about Transport System Expo 2020

The new coronavirus infection, which had been a concern since the beginning of the year, has developed into a global pandemic, and the Governor of Tokyo again sent a request for voluntary restraint of the event.

As a result, we decided that it would be difficult to hold the Transport System Expo 2020 in May. We sincerely apologize to all of you who have been preparing for the exhibition so far and those who have considered visiting the exhibition.

As announced previously, Transport System Expo 2020 will be rescheduled to December 1-3, 2020 and its venue will be Tokyo Ryutsu Center.

We would appreciate your understanding and continuous support.

Table of Contents

Outline...P4

Overview...P5

Floor Plan 2019...P6

Transport System Expo 2019 Post-show Data “Exhibitor list” ...P7

Transport System Expo 2019 Post-show Data “Visitor data By Industry Sector ” ...P8

Transport System Expo 2019 Post-show Data “Visitor data By Department ” ...P9

Transport System Expo 2019 Post-show Data ”Photograph” ...P10

Floor Plan 2020...P11

Access map...P12

Exhibit fees...P13

Exhibition Name: TRANSPORT SYSTEM EXPO 2020

Show date: Dec 1 (Tue) - 3 (Thu), 2020

Open hours:

Dec 1 (Tue) 13:00-18:00

Dec 2 (Wed) 10:00-18:00

Dec 3 (Thu) 10:00-17:00

Venue: Tokyo Ryutsu Center (TRC) Exhibition Hall

◆ Organizer: EJK Japan , Ltd.

◆ Show Management: EJK Japan , Ltd.

◆ Official supporters: The Japan Third Party Logistics Association, Transportation Digital Business Conference, Nihon Bus Association, Japan Accident Prevention Promotion Association, Japan Breath Alcohol Testing Consortium, Japan Direct Marketing Association, Japan Trucking Association, National Supermarket Association of Japan, Japan Federation of Hire-Taxi Associations, Japan Packaging Institute

◆ Concurrent expos: EXPO COMM Wireless Japan2020, Wireless Technology Park(WTP)2020,

[Concept of the Transportation System EXPO 2020]

“Problem-solving systems for the transportation and logistics industry”

Safe drive, accident prevention, health control of drivers, and staffing shortage are the major issues of transportation and logistics industry.

In recent years, accidents in the transportation and logistics industry are often covered in the news.

Supervisors and employers of drivers are obliged to urgently take measures to prevent tragic events instead of shifting the responsibility onto the drivers.

In the context of developing IoT and mechanization, “Transportation System EXPO” will offer information to solve problems of the industry and afford an opportunity to talk business through exhibitions and seminars.

Target Exhibitors:

■ Safe Drive, Accident Prevention

products or solutions supporting safe driving

【dashboard camera, fatigue measurement system, educational materials for preventing accidents, safe drive training, training application for reducing accidents, etc.】

■ Health Control

products or solutions for monitoring drivers' health or physical condition

【alcohol checker, air-conditioning clothes, IT call system, air-cooled cushion, call robot, testing device for sleep-disordered breathing, working wear, etc.】

■ Improving Operational Efficiency

system or solution to improve the operational efficiency of traffic control or drivers

【digital tachograph, car navigation system, labor management system, delivery management system, movement management system, blood-pressure recording software, etc.】

■ Improving Labor Shortage

job-search website for the industry

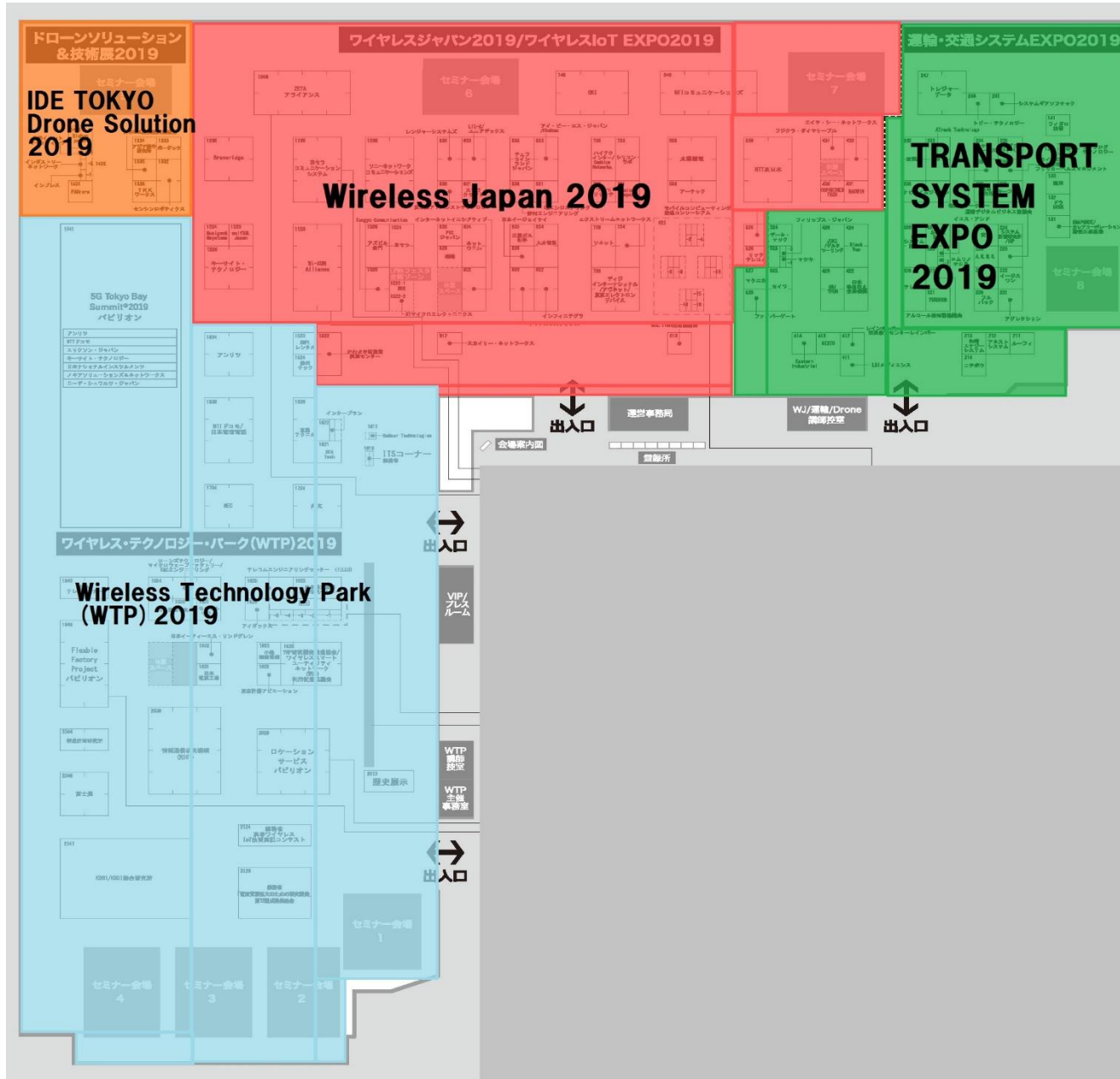
【internet job-search service, etc.】

Target visitors:

■ Transportation Operator ■ Logistics Operator ■ Logistics Management Department of a Company ■ Automobile Manufacturer

■ Automobile Dealer ■ Automobile Equipment or Parts Supplier ■ System Integrator ■ Infrastructure (Road, Railroad)

Floor Plan of 2019



Post-show Data of 2019

The exhibitor list of TRANSPORT SYSTEM EXPO

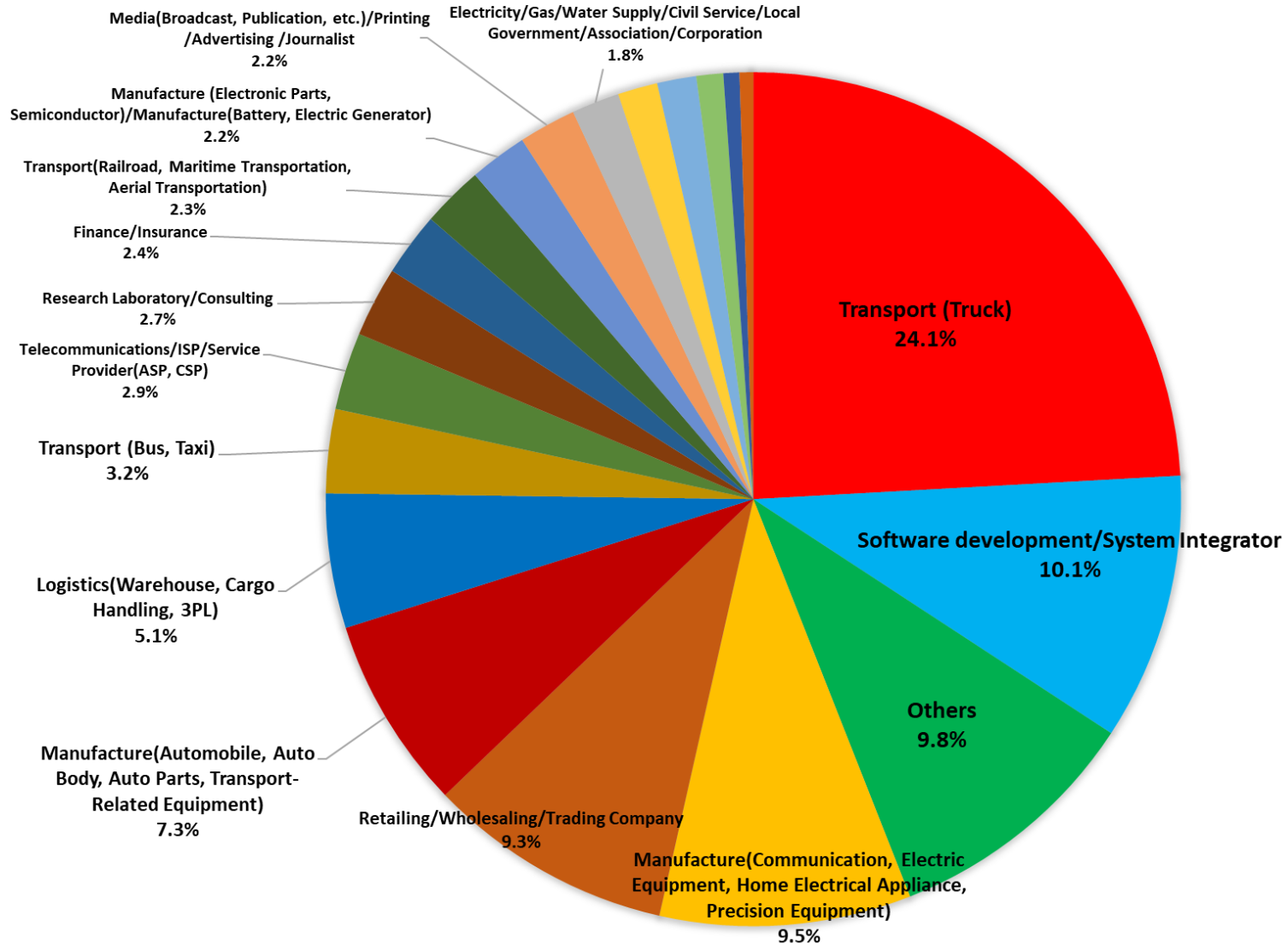
55Companies

A.R.M.S. Co., Ltd
AEGIS ONE CO., LTD
Agrexione Co.,Ltd
Akiba Shokai Co., Ltd
Anestsystem Ltd.
ATrack Technology Inc
Carea Corporation
COSMO Engineering.co.,LTD
Datatec Co.,Ltd
DELTATOOLING Co.,Ltd
DORAEVER Co., Ltd
Eastem Industrial, Corp
Fiber gate Inc
FIGARO ENGINEERING INC
Flicker Health Management Co.,Ltd
FULLBACK Corp
G&I TECH CO., LTD
HORIBA, Ltd
Japan accident prevention promotion association
Japan Breath Alcohol Testing Consortium
JUKI CORPORATION
KIEFEL CO., LTD
KUCHO FUKU Co., Ltd
Life Log Technology,Inc
LSI Medience Corporation
LUFU.CO., LTD
MACNICA,Inc
Matsuki Company Limited (Matsuki Driving School)

NAVITIME JAPAN Co., Ltd
Nemurinochikara
NICHIBOU Co., Ltd
NP System Development Co.,Ltd
Philips Respironics GK
Pittasoft Co., Ltd
Rainbow Motor School co., LTD Traffic Education Center Rainbow
Saitama
Research Institute of Systems Planning, Inc
RYOWA CORPORATION
SEIWA CO.,LTD
SHOEI Co., Ltd
SISTO CO., LTD
Snapshot Inc
SUNAUTAS CO., LTD
System Gear Softec
TELENISHI Limited
TESHIGAHARASANGYO
TOBII TECHNOLOGY K.K
Transportation Digital Business Conference
Treasure Data inc.
Trypro Inc.
WABCO Japan Inc
WEEKLY LOGISTICS NEWS CO., Ltd
Wiz Co.,Ltd
YAZAKI Energy System Corporation
Yes, and Co. Ltd
YURUSOR Co. , Ltd

Post-show Data of 2019

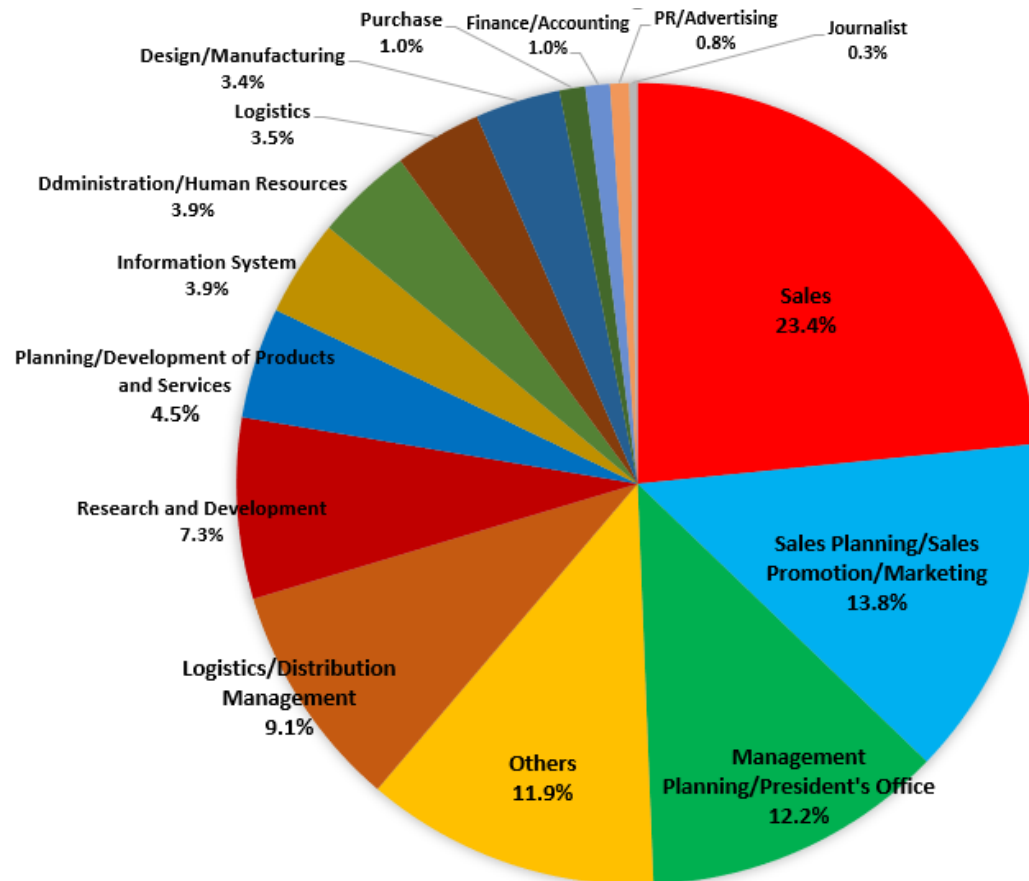
Visitor Data By Industry Sector of Transport System Expo



Post-show Data of 2019

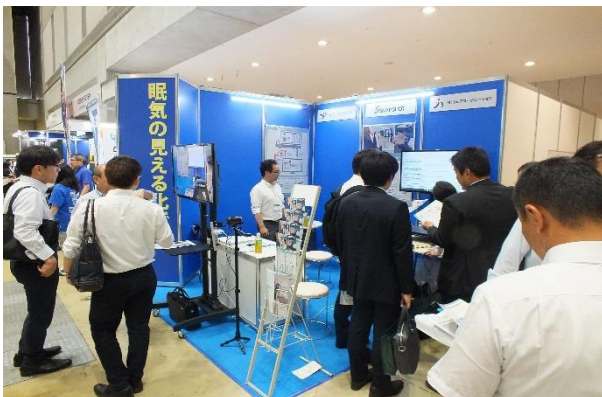
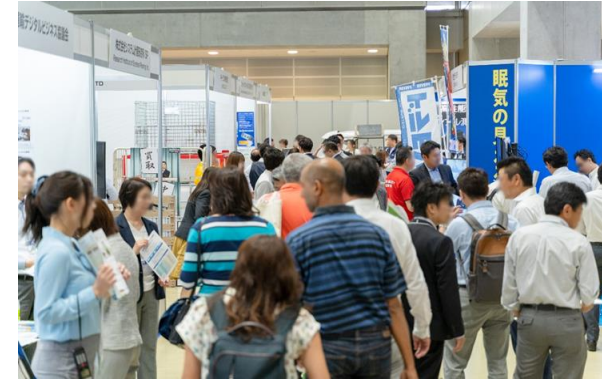
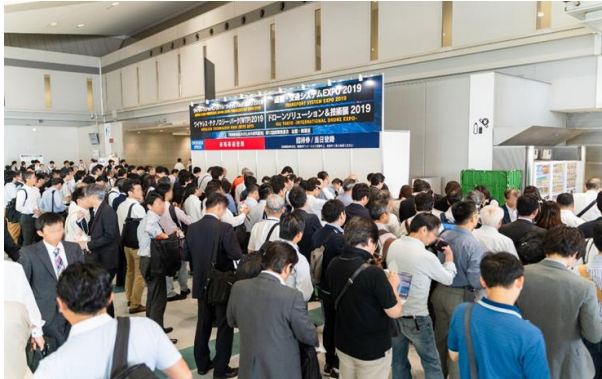
2019 Turnout (2018 data)	Wed 29th		Thurs 30th		Fri 31st		Subtotal/ expo	
Expo COMM Wireless Japan	9,260	(9,049)	9,688	(9,473)	12,044	(11,997)	30,992	(30,519)
Wireless Technology Park(WTP)	4,193	(3,970)	4,496	(4,021)	4,593	(4,366)	13,282	(12,357)
Int'l Drone Expo	1,519	(1,327)	1,472	(1,407)	1,711	(1,431)	4,702	(4,165)
Transport System Expo	2,499	(2,331)	2,627	(2,553)	2,655	(2,498)	7,781	(7,382)
Subtotal/ day	16,677	(16,260)	17,454	(15,528)	20,292	(18,786)		
Total turnout							56,757	(54,423)

Visitor Data by Department of Transport System Expo



Post-show Data of 2019

Photograph of Transport System Expo



Access map to Tokyo Ryutsu Center (TRC)

The closest is “Ryutsu Center Station” on the Tokyo Monorail



Floor Plan for 2020

Tokyo Ryutsu Center (TRC) Exhibition Hall

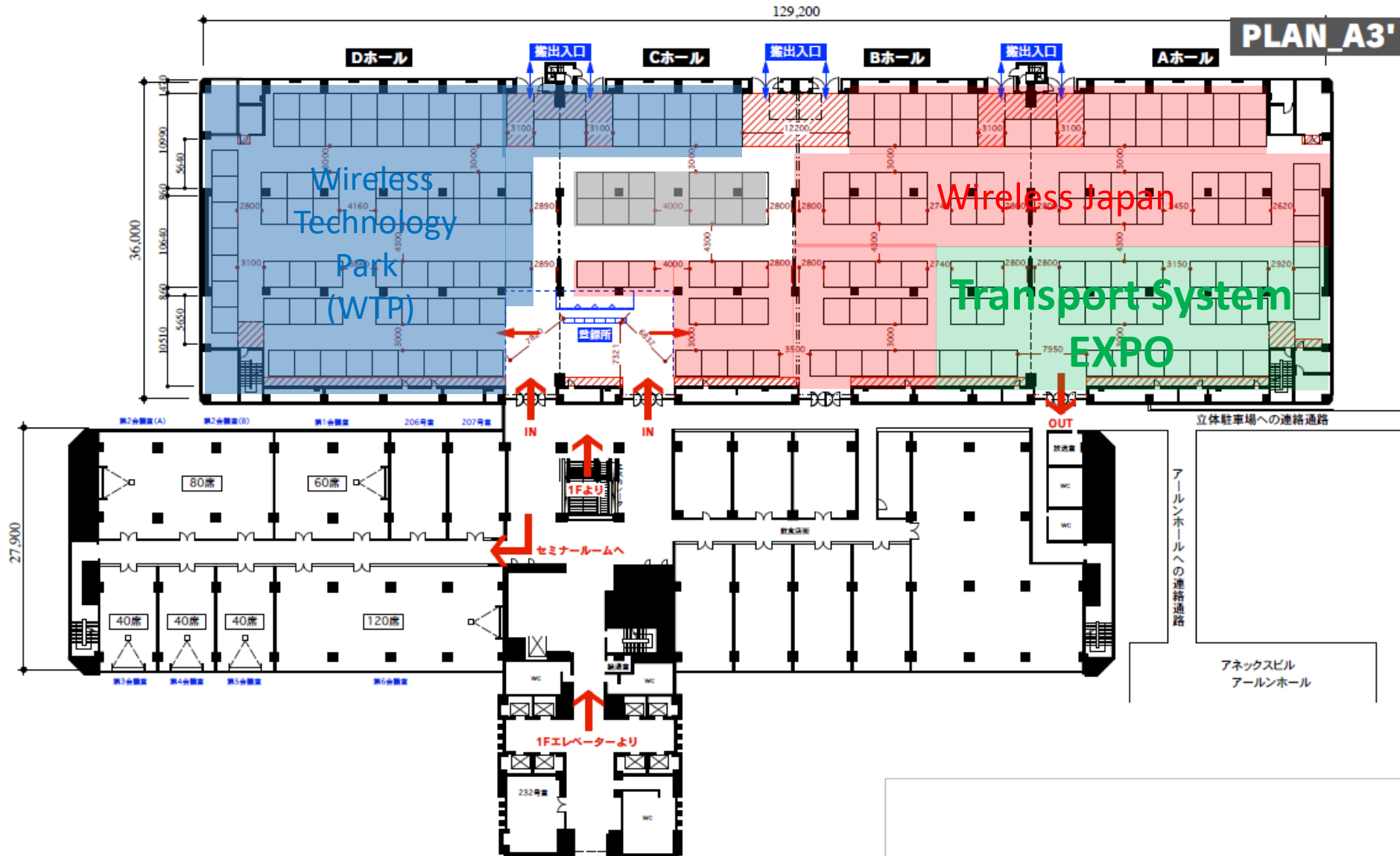


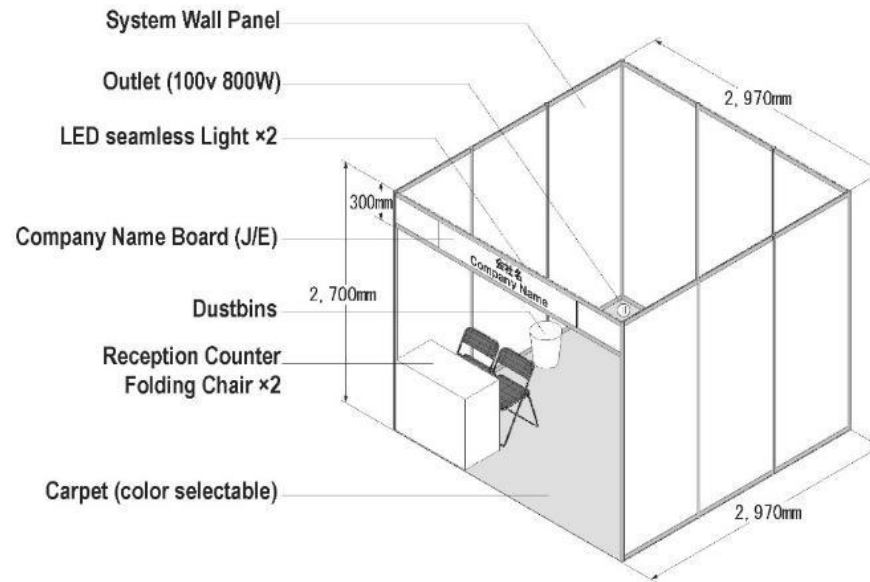
Exhibit fees

Raw space (incl. tax)

- Up to 2 spaces
JPY 384,120/ space (3x3m)
- Minimum 3 spaces
JPY 375,500/ space (3x3m)

Package booth (incl. tax)

Raw space+ Standard decoration
JPY 494,120/per booth (3x3m)
(As shown in the picture)



Corner booth additional charge (Incl. tax)

JPY 22,000/ corner

If a booth has two sides facing aisles, the fee will be charged.

Sponsorship plans (Incl. tax)

Exhibitor seminar: JPY 220,000/ 20-min session *Audience data will be shared.

- Targeting e-mail advertisement: JPY 110,000/distribution *This is an e-blast sent by the show management.
- Digital banner ad: JPY 110,000 *3 months on the official website from March 1st to May 29th 2020.
- Signboard ads and more: Please contact the show management office for details.

Exhibitor Application is Now Open



Show date: Dec 1 (Tue) - 3 (Thu), 2020

Open hours:

Dec 1 (Tue) 13:00-18:00

Dec 2 (Wed) 10:00-18:00

Dec 3 (Thu) 10:00-17:00

Venue: Tokyo Ryutsu Center (TRC) Exhibition Hall

Transport System Expo 2020 Show Management

Email: wwit2020@ejk-japan.co.jp

Fax: +81-3-6459-0445