

The exhibition focuses on
『Safety drive』 『Prevention car accident』
『Health care management』

TRANSPORT SYSTEM EXPO2015

May 27 to 29, 2015

Tokyo International Exhibition Center
(Tokyo Big Sight)

Co-held with
EXPO COMM WIRELESS JAPAN 2015
[Wireless network technology and Solution/service exhibition]

Summary

■ Theme: Truck / Bus / Taxi etc

Safety, Energy saving and Health care management

Safety drive, Prevention car accidents, Energy saving, and Health care management are important theme to transport industry. To solve those issues, systems, products and technologies are gathered at here – “TRANSPORT SYSTEM EXPO 2015”.

While ensuring safety drive, to assist efficient driving equipments and systems, or products for supporting drivers etc, we are inviting an exhibition of products that are most attention now. Moreover, some seminars and presentations will be held to get visitors who are highly interested in the products.

“TRANSPORT SYSTEM EXPO 2015” provides you a great business chances for developing new customers and market expansion.

Summary of the exhibition

NAME OF SHOW	TRANSPORT SYSTEM EXPO 2015
DATE OF SHOW	May 27 to 29, 2014
VENUE	Tokyo International Exhibition Center (Tokyo Big Sight)
ORGANIZERS	TRANSPORT SYSTEM Committee
MANAGEMENT OFFICE	Parabox, Ltd. / EJK Japan, Ltd.
COORPORATION	MICE Japan Co., Ltd. / Nissin Corporation
ENDORSE	Japan Tracking Association, Japan Local Network System, Japan packaging Institute, Japan pallet association, Japanese Material Handling Society, The Japan Institute of Material Handling, Organization for the promotion of low emission vehicles, etc.

The exhibition is Co-held with Wireless Japan 2015 that is gathered 45,000 visitors.

We will assist matchmaking o exhibitors and visitors of Wireless Japan and Wireless ICT industry.

Exhibit product

Safety drive support system

Safety drive support system, Route navigation system, and other product that support safety driving gather.

■ Exhibit product category

OBD II, Safety drive support system, Doze prevention system, Clash prevention, Navigation system, IT roll call system, Alcohol checker, Eco driving support system, TPMS (Tire Pressure Monitoring System), Back eye camera, etc.

Driving control system

Driving control system meet the needs of cost reduction from carrying company.

■ Exhibit product category

Digital tachograph, Driving recorder, Car navigation, GPS, Transport quality control system, transport/allocation of cars system, IP wireless, On-board computer, Communication system, Cloud computing, Sales order management system, Antitheft security system, Antivirus, Information leakage (Log management, coded tool), Biometric identification etc.

Labor management

Improving driver's working time and work environment is important theme to keep safety drive operation and to reduce accident.

■ Exhibit product category

Refreshing sleep, Driver's healthcare management equipment/service.

Driver assistance equipment

A driver's burden relief system or technology, for instance air-conditioner operation on idling stopping, tail gate lifter and audio alert etc., are also necessary to keep secure operation.

■ Exhibit product category

Idling stop support system (air-conditioner/マツト/backup system, etc), fatigue alleviation, Audio alert, On-board cargo equipment, Lashing belt, etc.

Exhibit product

Energy saving device & system, Maintenance

Technology of low-fuel consumption is developing. Introducing Compressed Natural Gas car is also one of way for less energy consumption operation. This theme focuses on new technology for saving operation cost.

■ Exhibit product category

Truck, Shell gas/CNG car (Compressed Natural Gas), Energy saving tire for TB, Fuel-efficient driving assist system, Improvement of fuel efficiency technology, Compressed Natural Gas car, Equipment/system related to Energy saving etc.

Truck Bodies

Track bodies are developed for improvement of cargo handling efficiency and Safe work. This is an important item for the realization of the trucking ideal.

In addition, cold storage and cars refrigerator car in pursuit to the extreme heat insulation performance is also the body to contribute to energy saving operation. Improvement of safety, please suggest a variety of track body with energy saving effect.

■ Exhibit product category

Truck bodies(Variable tilt angle bed vehicle, Lifting roof wing, superinsulation type freezer etc) are developed based on Safety and Energy saving.

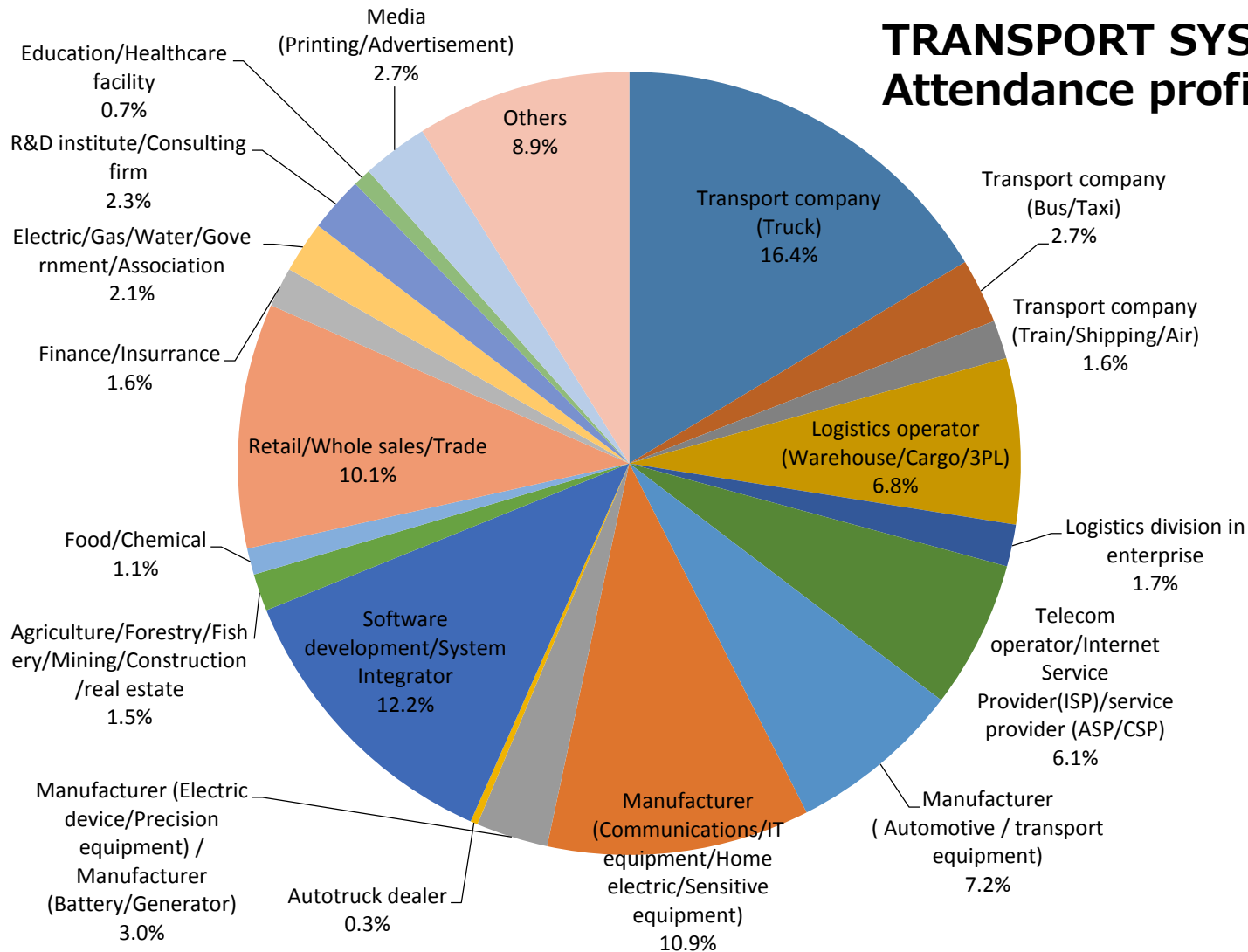
Targeted visitors

- Transport operators
- Bus/Taxi operators
- Logistics management department of company
- Third-party logistics (3PL) company
- Automobile manufacturer
- Automobile dealer
- Equipment and parts company
- System Integrator etc.

TRANSPORT SYSTEM EXPO2014 Achievement

Attendance: 44,740 visitors (45,003 visitors in 2013)

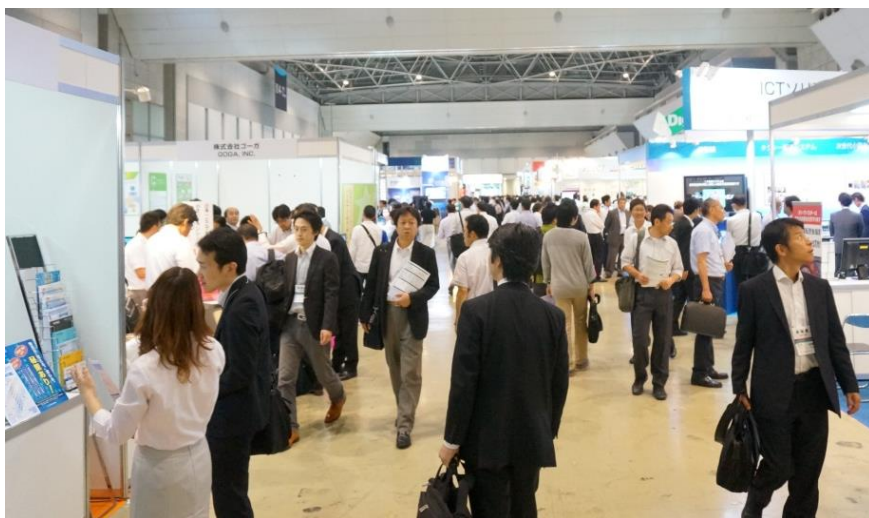
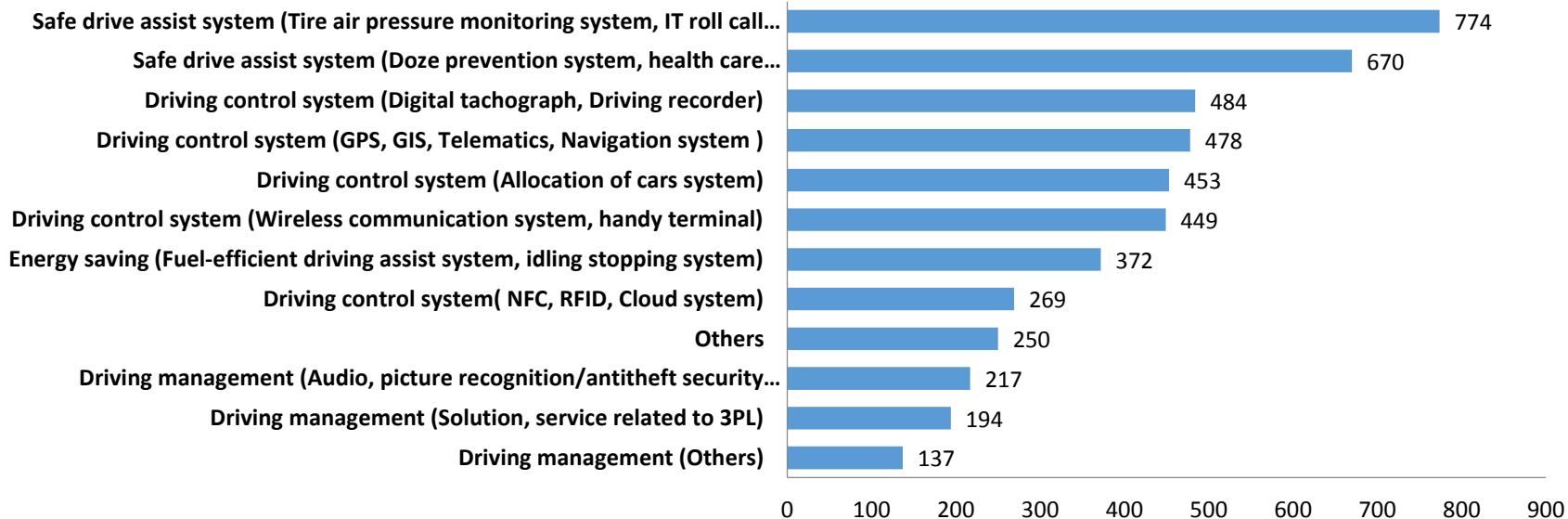
[details: May 28 12,683 visitors / May 29 14,585 visitors / May 30 17,472 visitors ※Including Co-held exhibition visitor]



TRANSPORT SYSTEM EXPO2014 Attendance profile

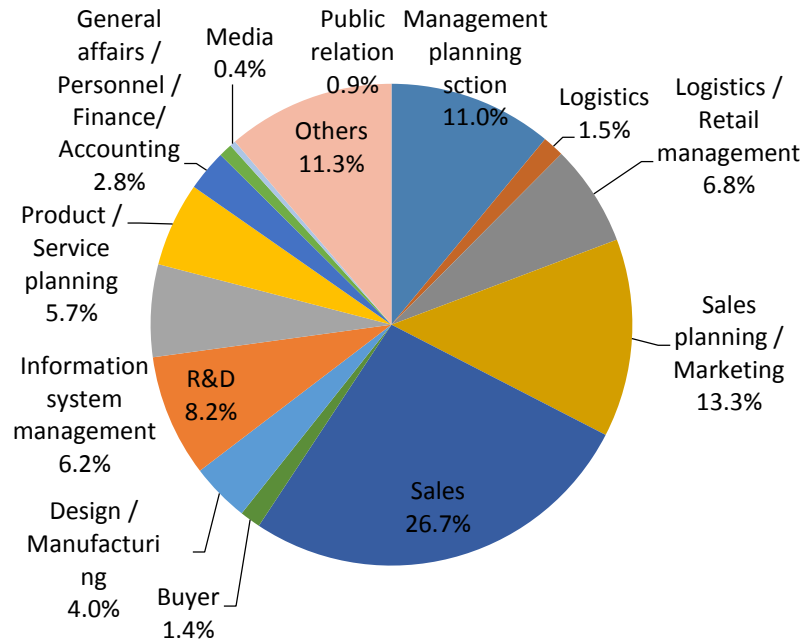
TRANSPORT SYSTEM EXPO2014 Achievement

Products of Interest / Keyword (multiple answers allowed)

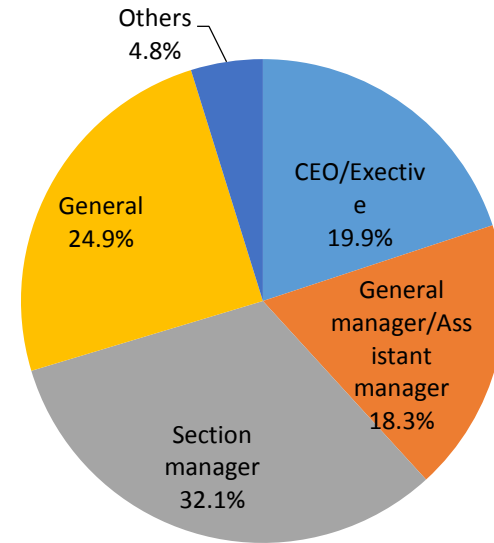


TRANSPORT SYSTEM EXPO2014 Achievement

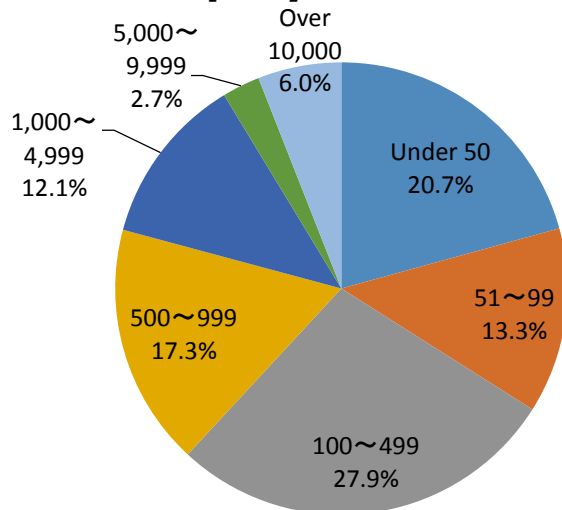
Department



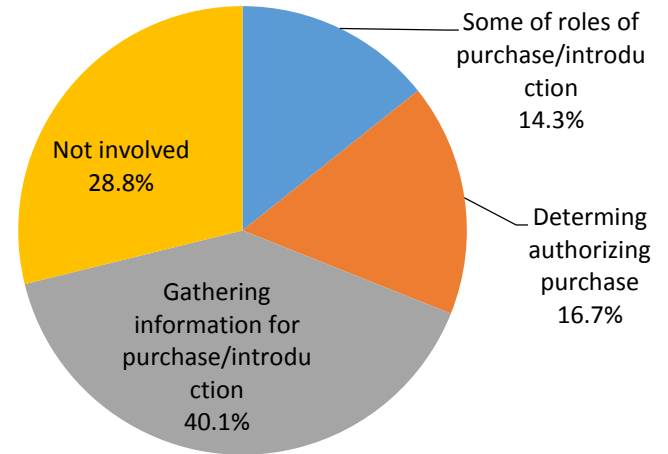
Title



Number of employee



How do you get involved when introducing new products/services



Promotion

1. Japan Tracking Association

Tie-up with Japan Tracking Association again! To invite more visitors from Transportation companies.

- Deliver direct mail to 60,000 companies in the member list of transportation industry
- Publish held advertisement and press release on organ paper "publicity truck"

2. Japan Local Network System

Union to join the transport operators of small and medium sized of about 2,000 companies.

- Deliver exhibition information to the member companies. Promote the coming small and medium sized shipping companies.

3. Other Associations

Japan Bus Association, Tokyo Route Truck Conference Association, Japan Federation of Freight Industries, Japan Packaging Institute, Japan pallet association, The Japan Institute of Material Handling, The Japan Institute of Material Handling, Organization for the promotion of low emission vehicles (LEVO) , Japan Federation of Hire-Taxi Association, Japan 3PL Association, Tokyo Industrial Waste Association, etc

- Each associations deliver exhibition information to the member companies, invite more visitors from transportation industry.



4. Logistics Weekly

Publish advertisement on Logistics weekly to get more visitors

5. The TRUCK

Publish advertisement and article on The TRUCK.

In addition, it will publish exhibitor's information so that more information will be delivered to readers.

6. Press release

exhibition held information will be able to publish in the industry organ paper.

7. DM

Deliver email each members in the member list that is holding by management office. It assists to meet your targeted clients.

EXHIBIT FEE (NOT include tax)

- Raw Exhibit Space : 349,200JPY / (3mx3m)
- Package booth (※1) : 449,200JPY / 1unit (3mx3m)
- Trial pack (※2) : 150,000JPY / 1unit (W1.5m x D1.2m)

※1 Including: White wall, Company name plate, Floor carpets, Reception counter, Chair, Fluorescent lamp (two), Power supply (800w), Electricity usage and Wastepaper basket.

※2 Including: Display stand, Company name plate, Power supply (500w) and Electricity usage.

■ Exhibitor presentation 60,000JPY / 1 presentation (20minutes)

We offer you a great opportunity to introduce your products to Japanese professional through a presentation. The program will be announced widely to visitors through HP or DM.

-presentation period: 15minutes -seat: 60~80 stas

-what's included in the fee: DM, announcement using WEB・e-mail, presentation equipment, and audience's business card will be given to you

■ Sponsorship menu

1. Venue map advertisement・・・150,000JPY size: W30×H15cm

Sponsor advertisement puts near the doorway.

2. Exhibition hall general reception signage・・・500,000JPY size: W118×H95cm (draft)

All visitors will be in a line so that everybody sees the advertisement.

3. Visitors' badge・・・500,000JPY size: W9×H3cm (draft)

all visitors will put this badge so that they will be as a "moving advertisement"

4. Official WEB site banner advertisement・・・100,000JPY

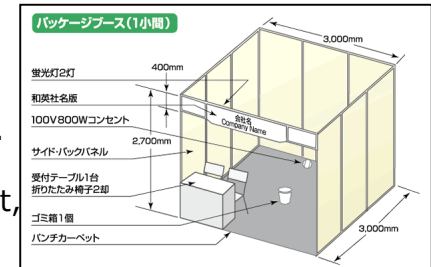
size: top and bottom60 × left and right150picel (draft)

It will appear top of the Official web site from April

■ Deadline: February 20, 2015

We will stop accepting applications once all spaces are sold out.

※feel free to contact us for any question, e.g. deadline of exhibit fee payment)



INQUIRY FOR FURTHER INFORMATION

Show Management Office:

EJK Japan, Ltd. truck-info@ejk-japan.co.jp

Phone: +81-3-6459-0444 / FAX: +81-3-6459-0445

Address: Landmark Shibakoen 7F, 1-2-6, Shibakoen Minato-ku, Tokyo 105-0011 JAPAN